



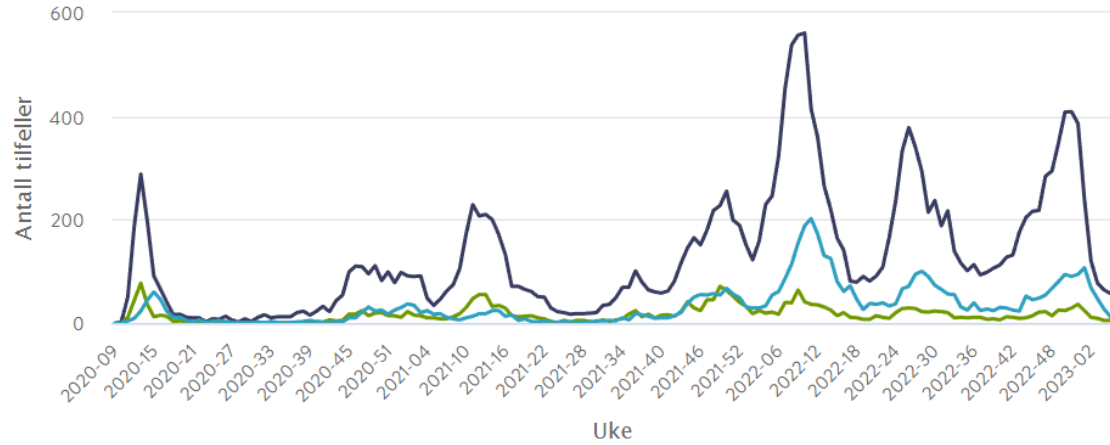
RINGERIKE
KOMMUNE

AMU – sykefravær 2022

16.02.2023

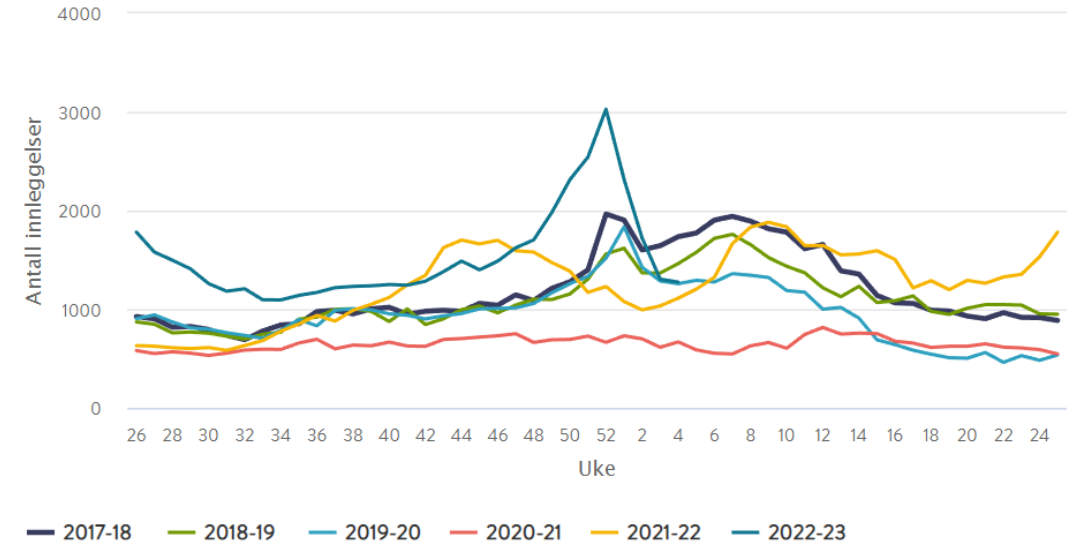


Status for pandemien nasjonalt

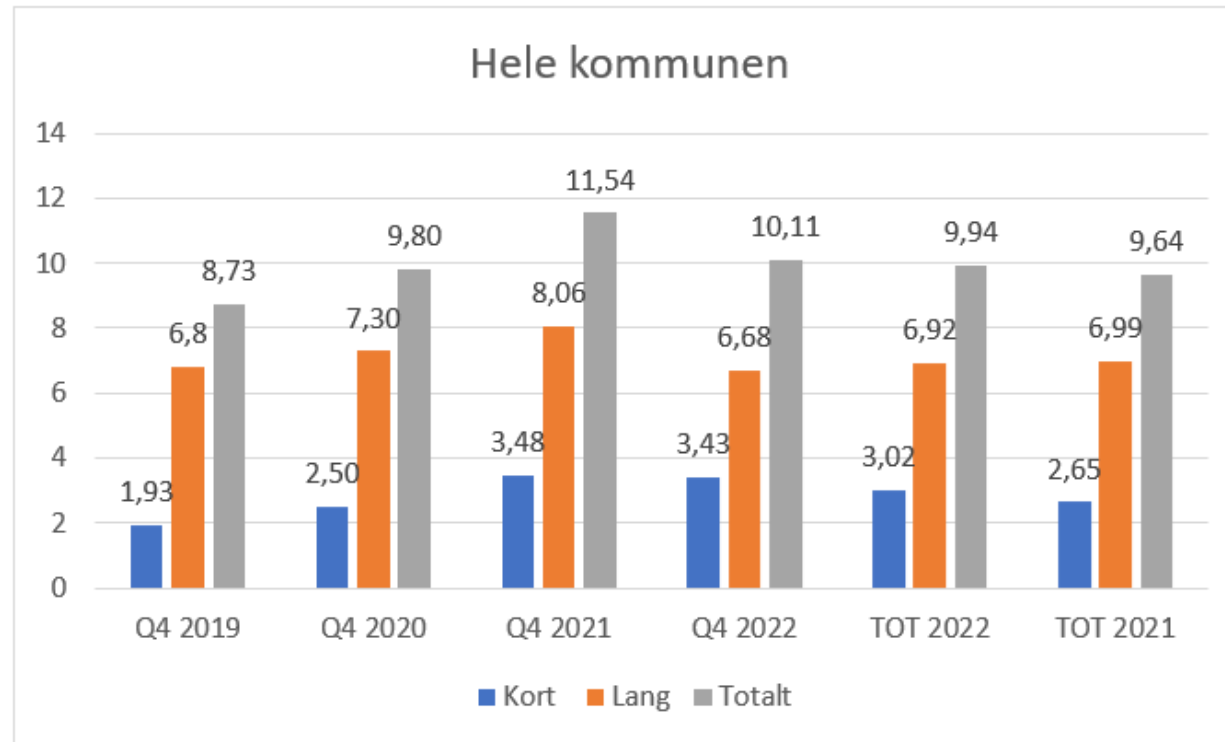


Kilde: Folkehelseinstituttet

Nye innleggelser med luftveisinfeksjon i sykehus

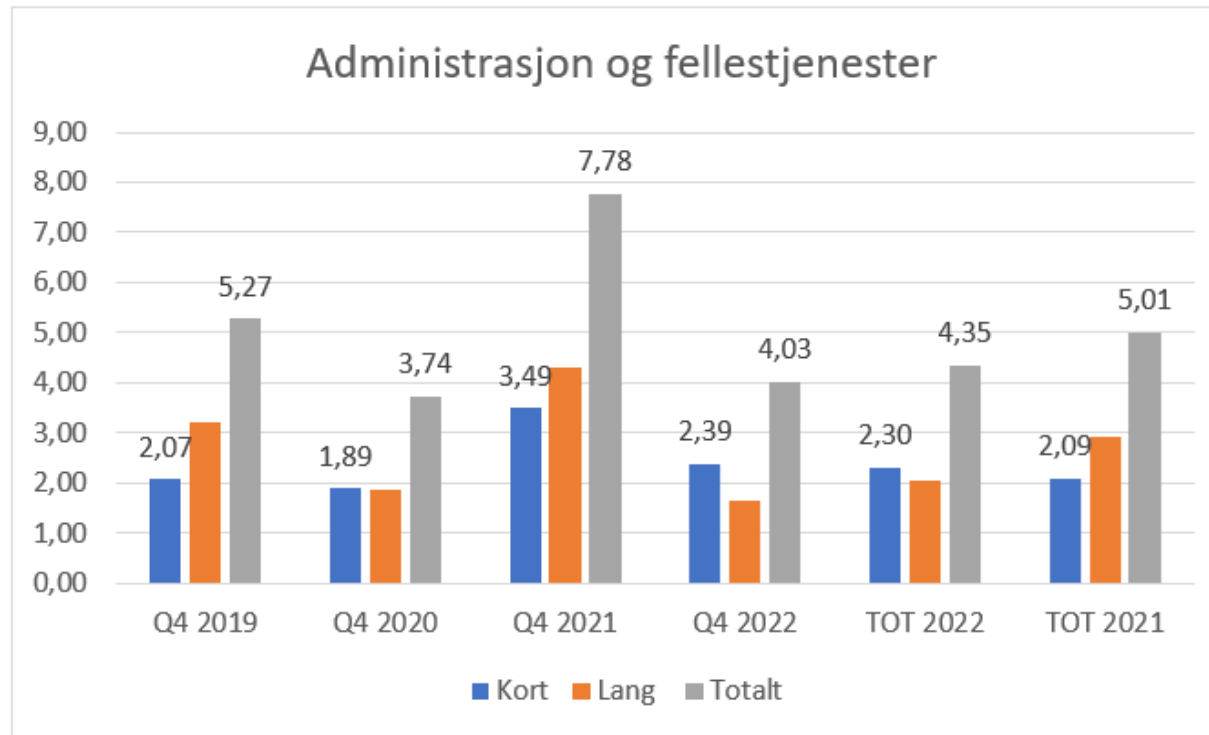


Sykefravær hele kommunen 2022

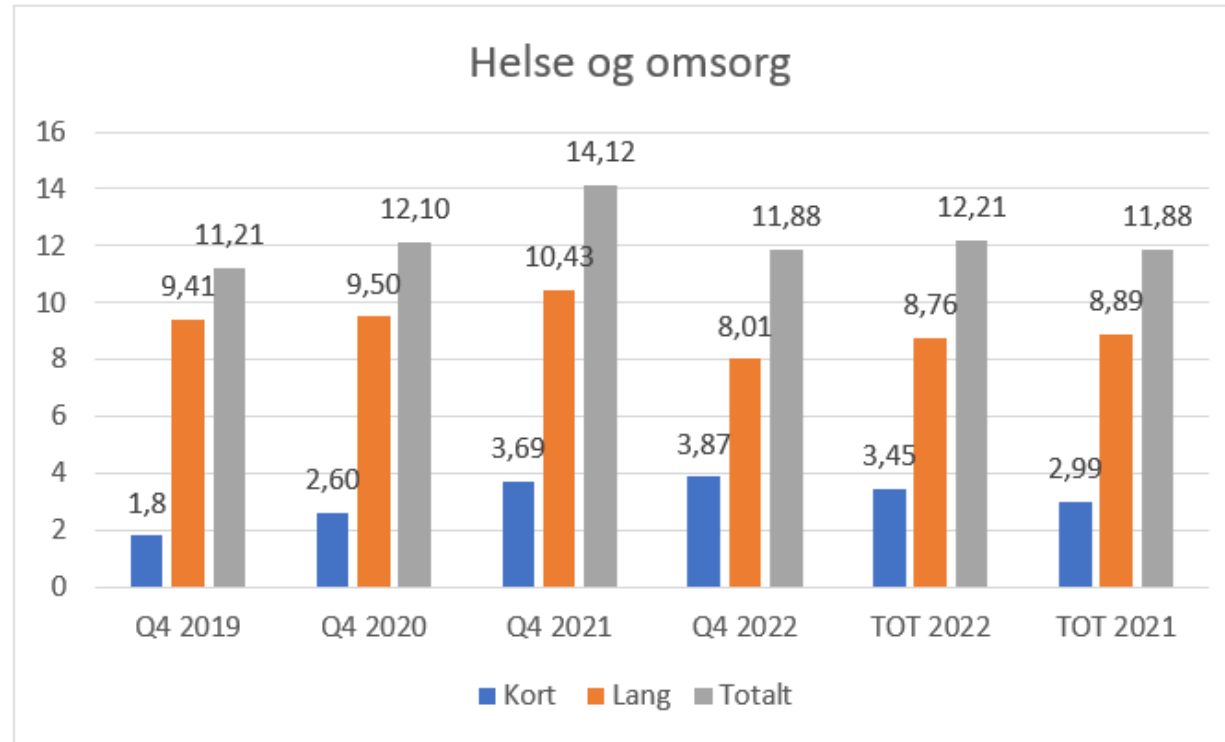


	Q4 2019	Q4 2020	Q4 2021	Q4 2022	TOT 2022	TOT 2021
Kort	1,93	2,50	3,48	3,43	3,02	2,65
Lang	6,8	7,30	8,06	6,68	6,92	6,99
Totalt	8,73	9,80	11,54	10,11	9,94	9,64

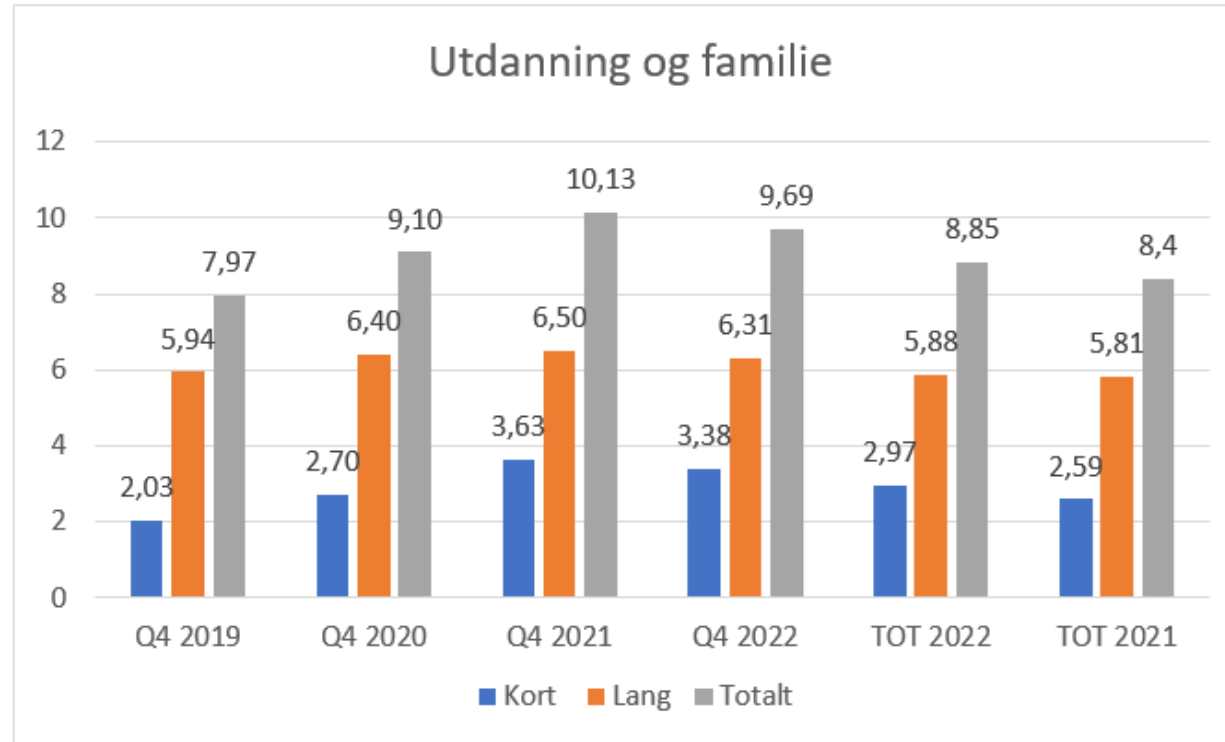




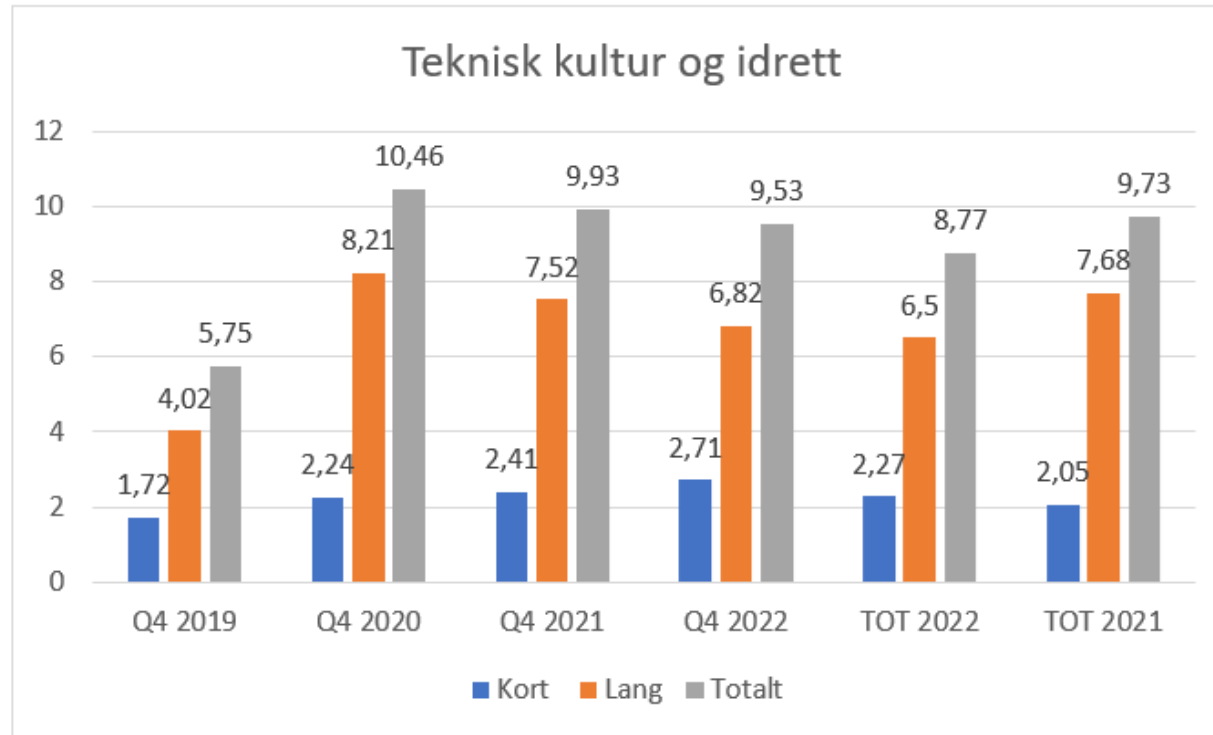
	Q4 2019	Q4 2020	Q4 2021	Q4 2022	TOT 2022	TOT 2021
Kort	2,07	1,89	3,49	2,39	2,30	2,09
Lang	3,20	1,85	4,29	1,64	2,05	2,91
Totalt	5,27	3,74	7,78	4,03	4,35	5,01



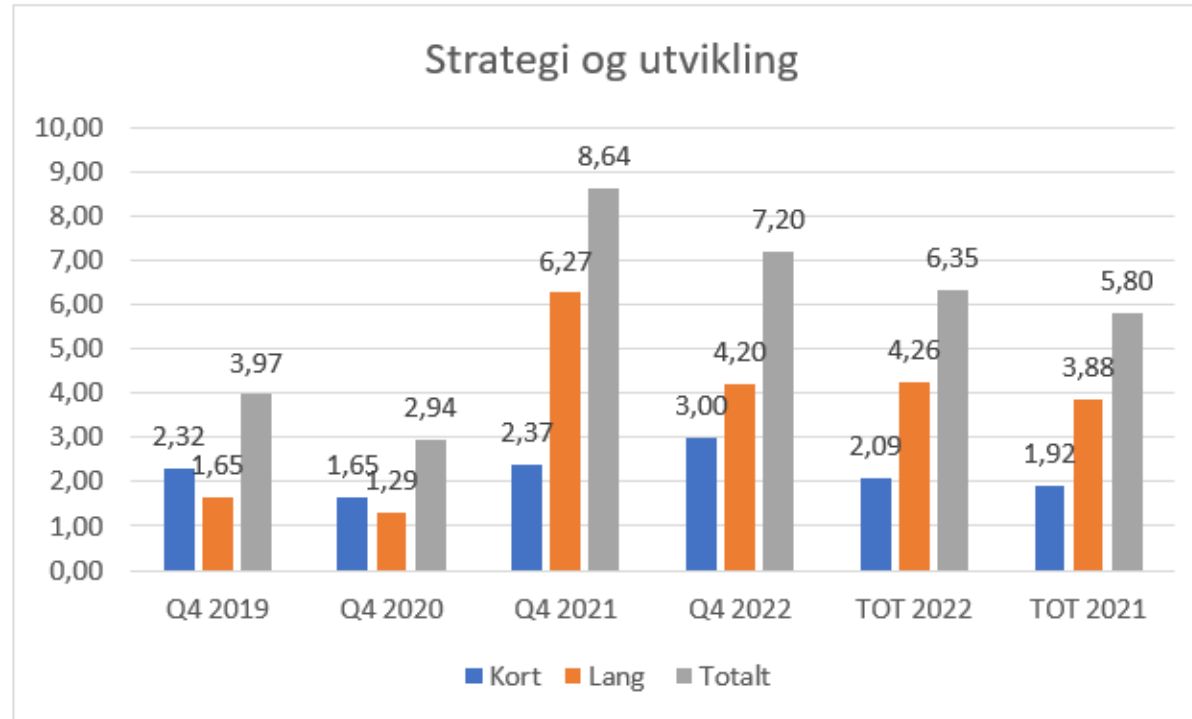
	Q4 2019	Q4 2020	Q4 2021	Q4 2022	TOT 2022	TOT 2021
Kort	1,8	2,60	3,69	3,87	3,45	2,99
Lang	9,41	9,50	10,43	8,01	8,76	8,89
Totalt	11,21	12,10	14,12	11,88	12,21	11,88



	Q4 2019	Q4 2020	Q4 2021	Q4 2022	TOT 2022	TOT 2021
Kort	2,03	2,70	3,63	3,38	2,97	2,59
Lang	5,94	6,40	6,50	6,31	5,88	5,81
Totalt	7,97	9,10	10,13	9,69	8,85	8,4



	Q4 2019	Q4 2020	Q4 2021	Q4 2022	TOT 2022	TOT 2021
Kort	1,72	2,24	2,41	2,71	2,27	2,05
Lang	4,02	8,21	7,52	6,82	6,5	7,68
Totalt	5,75	10,46	9,93	9,53	8,77	9,73



	Q4 2019	Q4 2020	Q4 2021	Q4 2022	TOT 2022	TOT 2021
Kort	2,32	1,65	2,37	3,00	2,09	1,92
Lang	1,65	1,29	6,27	4,20	4,26	3,88
Totalt	3,97	2,94	8,64	7,20	6,35	5,80



RINGERIKE
nærmest det meste



RINGERIKE
KOMMUNE